



Belsize Park NW3

Parkheath
Sold on Service





Belsize Park, NW3

Asking Price £1,200,000

Leasehold - Share of Freehold

- An imposing 2 double bedroom, 2 bathroom apartment
- Entire first floor, approx 1066 sq ft
- Set in handsome white stucco fronted period conversion
- Abundance of character with wood flooring, sash windows, cornicing and picture rail
- Spacious 21ft reception with feature fireplace
- Separate 13ft kitchen with door to balcony
- 15ft main bedroom with en suite shower room
- 10ft second bedroom plus a bathroom
- Share in freehold company
- Perfectly positioned for Belsize Village, Belsize Park and Swiss Cottage

Belsize Park/Hampstead
208 Haverstock Hill
NW3 2AG
Sales 020 7431 1234
Lettings 020 7431 3104
nw3@parkheath.com

South/West Hampstead
192 West End Lane
NW6 1SG
Sales & Lettings
Tel 020 7794 7111
192@parkheath.com

Kensal Rise
54-56 Chamberlayne Rd
NW10 3JH
Tel 020 8960 4845
kensal@parkheath.com

Property Management
192 West End Lane
NW6 1SG
020 7433 6174
pm@parkheath.com

Parkheath
Sold on Service

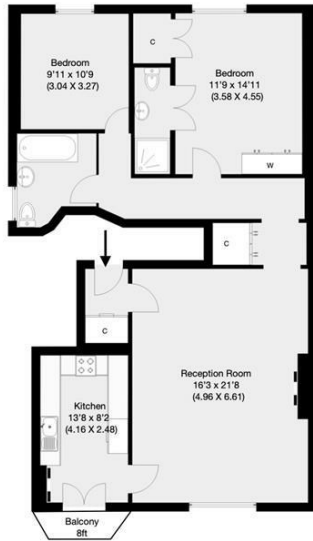
Camden Tax band G

www.parkheath.com



Belsize Park, London, NW3

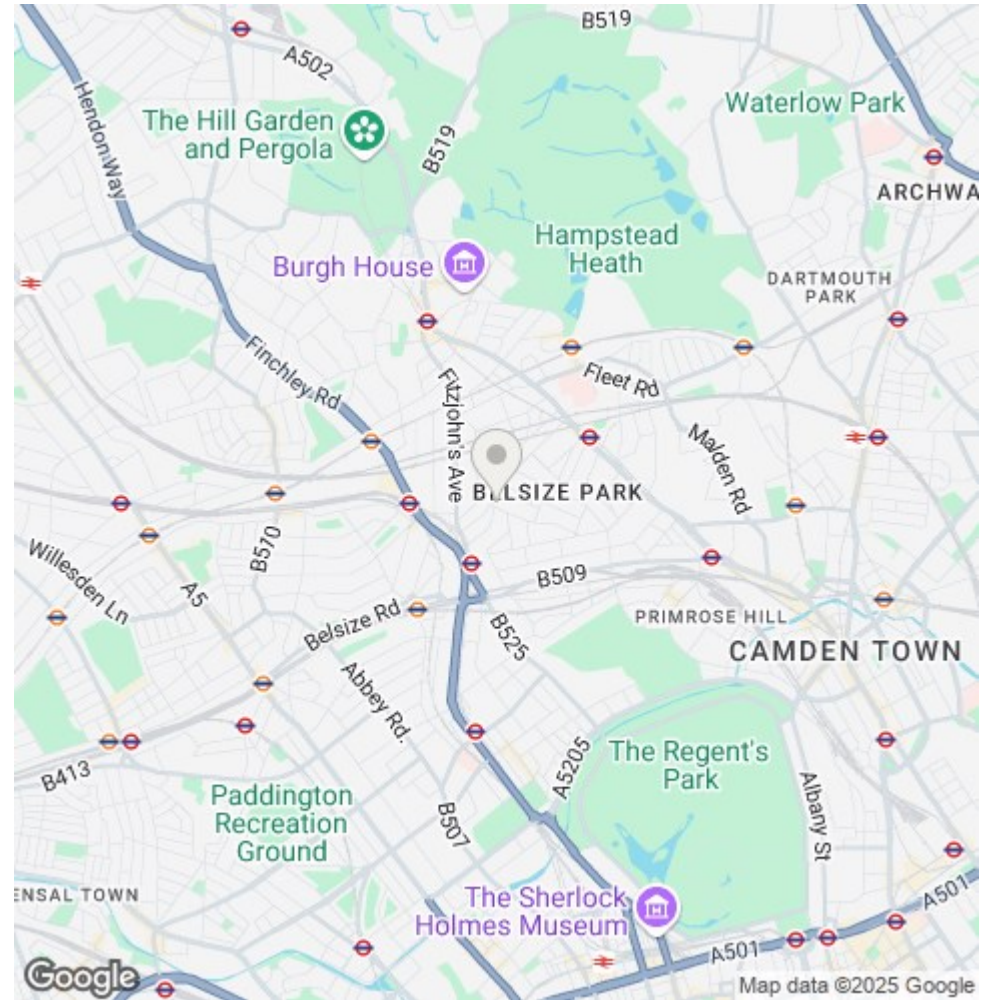
Approximate Gross Internal Area 99 sqm / 1066 sqft



First Floor

THIS FLOOR PLAN IS PRODUCED FOR PARKHEATH SUBMITTED BY **ARCHIMEDIA** web: www.archi-media.co.uk

Whilst every attempt has been made to ensure the accuracy of the floor plan contained herein, measurements of doors, windows and rooms are approximate and no responsibility is taken for any error, omission or misstatement. These plans are for representation purposes only and should be used as such by any prospective buyer or lease. Specifically no guarantee is given on the gross internal floor area of the property if quoted on this plan and any figures given in initial guidance only and should be treated as such.



The particulars do not constitute part of an offer or contract. The particulars, including text, photographs and plans, are for the guidance only of prospective purchasers/tenants and must not be relied upon as statements of fact. The descriptions provided therein represent the opinion of the author and whilst given in good faith should not be construed as statements of fact. Nothing in these particulars shall be deemed a statement that the property is in good condition or otherwise or that any services or facilities are in good working order. All measurements are approximate